

# 1.5mm

(0.059'') PITCH CONNECTOR

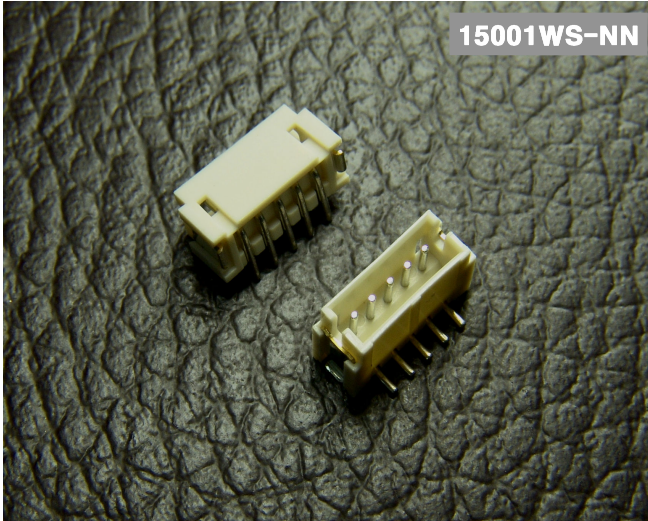
## Wire to Board Connectors

Wafer

Emboss Type

SMT Type

Straight



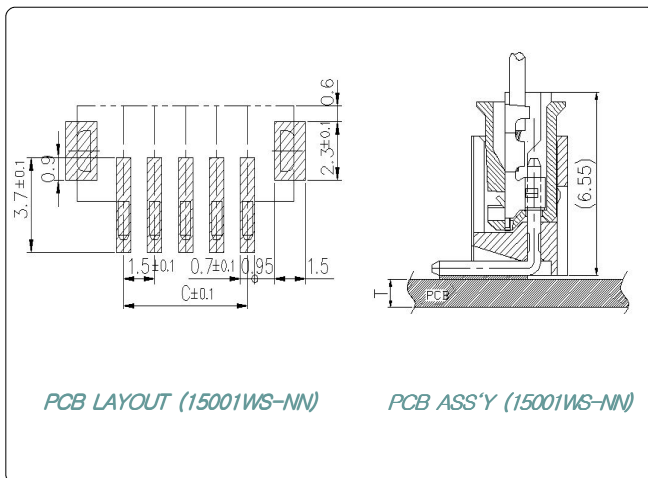
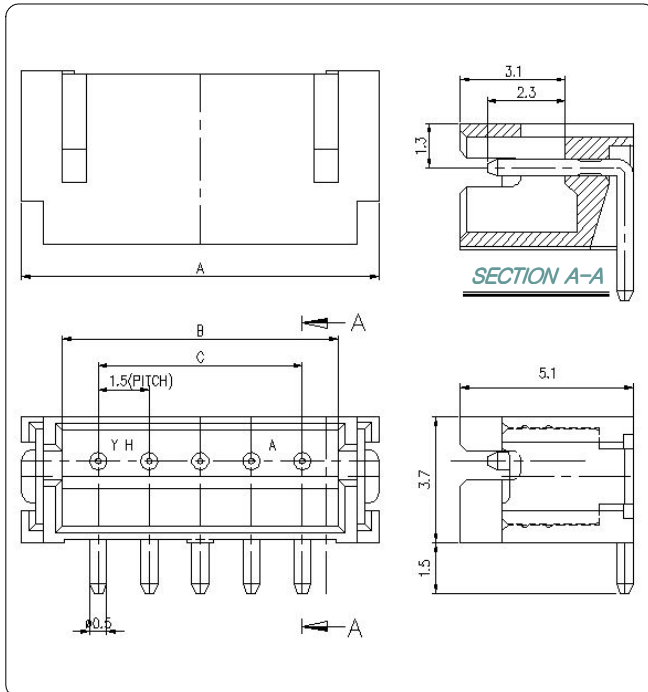
15001WS-NN

### Material

I/NO	DESCRIPTION	MATERIAL
1	WAFER	PA46 or PA6T, UL94V-0
2	PIN	Brass, Tin-plated
3	HOOK	Brass, Tin-plated

### Available Pin

PARTS NO.	A	B	C
15001WS-02	6.0	3.6	1.5
15001WS-03	7.5	5.1	3.0
15001WS-04	9.0	6.6	4.5
15001WS-05	10.5	8.1	6.0
15001WS-06	12.0	9.6	7.5
15001WS-07	13.5	11.1	9.0
15001WS-08	15.0	12.6	10.5
15001WS-09	16.5	14.1	12.0
15001WS-10	18.0	15.6	13.5
15001WS-11	19.5	17.1	15.0
15001WS-12	21.0	18.6	16.5
15001WS-13	22.5	20.1	18.0



PCB LAYOUT (15001WS-NN)

PCB ASS'Y (15001WS-NN)

### Specification

ITEM	SPEC
Voltage Rating	AC/DC 250V
Current Rating	AC/DC 1A
Operating Temperature	-25°C~+85°C
Contact Resistance	30mΩ MAX
Withstanding Voltage	AC500V/1min
Insulation Resistance	500MΩ MIN
Applicable Wire	
Applicable P.C.B	0.8~1.6mm
Applicable FPC/FFC	-
Solder Height	-
Crimp Tensile Strength	-
UL FILE NO	-