

# 2.50mm

(0.098'') PITCH CONNECTOR

## Wire to Board Connectors

Wafer

Right Angle

Dip Type



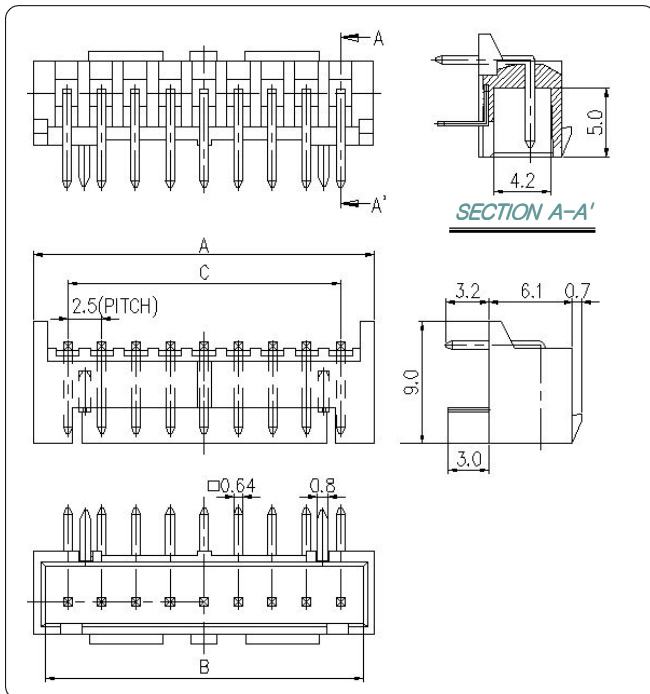
SMAW250A-NN

### Material

| I/NO | DESCRIPTION | MATERIAL          |
|------|-------------|-------------------|
| 1    | WAFER       | NYLON 66, UL94V-0 |
| 2    | PIN         | Brass, Tin-plated |
| 3    | HOOK        | Brass, Tin-plated |

### Available Pin

| PARTS NO.   | A    | B    | C    |
|-------------|------|------|------|
| SMAW250A-02 | 7.4  | 5.9  | 2.5  |
| SMAW250A-03 | 9.9  | 8.4  | 5.0  |
| SMAW250A-04 | 12.4 | 10.9 | 7.5  |
| SMAW250A-05 | 14.9 | 13.4 | 10.0 |
| SMAW250A-06 | 17.4 | 15.9 | 12.5 |
| SMAW250A-07 | 19.9 | 18.4 | 15.0 |
| SMAW250A-08 | 22.4 | 20.9 | 17.5 |
| SMAW250A-09 | 24.9 | 23.4 | 20.0 |
| SMAW250A-10 | 27.4 | 25.9 | 22.5 |
| SMAW250A-11 | 29.9 | 28.4 | 25.0 |
| SMAW250A-12 | 32.4 | 30.9 | 27.5 |
| SMAW250A-13 | 34.9 | 33.4 | 30.0 |
| SMAW250A-14 | 37.4 | 35.9 | 32.5 |
| SMAW250A-15 | 39.9 | 38.4 | 35.0 |



### Specification

| ITEM                   | SPEC         |
|------------------------|--------------|
| Voltage Rating         | AC/DC 250V   |
| Current Rating         | AC/DC 3A     |
| Operating Temperature  | -25°C~+85°C  |
| Contact Resistance     | 30mΩ MAX     |
| Withstanding Voltage   | AC1000V/1min |
| Insulation Resistance  | 1000MΩ MIN   |
| Applicable Wire        | -            |
| Applicable P.C.B       | -            |
| Applicable FPC/FFC     | -            |
| Solder Height          | -            |
| Crimp Tensile Strength | -            |
| UL FILE NO             | E108706      |

