

4.20mm

(0.165") PITCH CONNECTOR

Wire to Board Connectors

Wafer

Straight

Dip Type

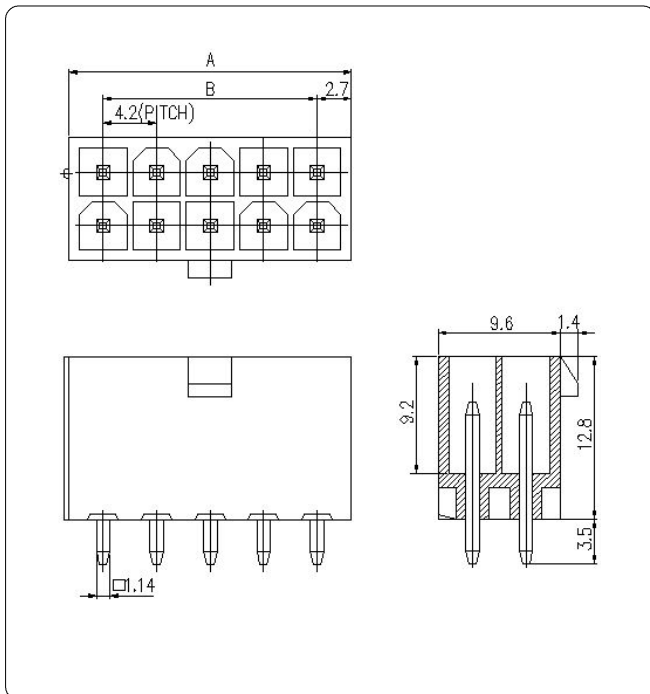


Material

I/NO	DESCRIPTION	MATERIAL
1	WAFER	NYLON 66,UL94V-2
2	PIN	Brass, Tin-plated

Available Pin

PARTS NO.	A	B
SMW420-02	5.4	-
SMW420-04	9.6	4.2
SMW420-06	13.8	8.4
SMW420-08	18.0	12.6
SMW420-10	22.2	16.8
SMW420-12	26.4	21.0
SMW420-14	30.6	25.2
SMW420-16	34.8	29.4
SMW420-18	39.0	33.6
SMW420-20	43.2	37.8
SMW420-22	47.7	42.0
SMW420-24	51.6	46.2



Specification

ITEM	SPEC
Voltage Rating	AC/DC 600V
Current Rating	AC/DC 9A
Operating Temperature	-25°C ~ +85°C
Contact Resistance	30mΩ MAX
Withstanding Voltage	AC1500V/1min
Insulation Resistance	1000MΩ MIN
Applicable Wire	-
Applicable P.C.B	1.2 ~ 1.6mm
Applicable FPC/FFC	-
Solder Height	-
Crimp Tensile Strength	-
UL FILE NO	-

